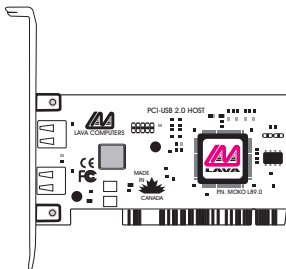


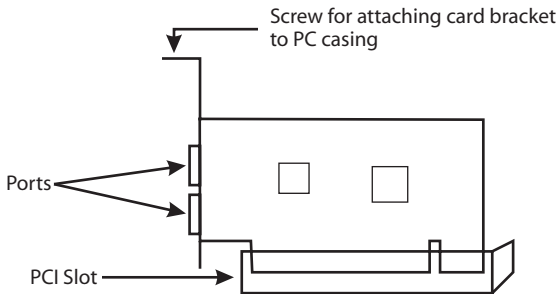
Lava USB 2.0 Host Adapter Installation Manual



Rev. B00

Hardware Installation

1. Before opening the casing of your computer, make sure that all power is off.
2. Open the case of your computer according to the manufacturer's instructions. Before proceeding further, touch a bare metal portion of the computer case to discharge any static electricity your body may have.
3. Locate an unused PCI slot (any PCI slot will do). PCI slots are white plastic.



4. Unscrew and remove the metal slot cover corresponding to the slot that will hold the USB 2.0 Host Adapter card, and retain the screw.
5. Holding the USB 2.0 Host Adapter card without touching its gold connectors, insert it into the PCI slot. Ensure that it is well seated.
6. Screw the metal bracket of the USB 2.0 Host Adapter card to your PC's casing and replace the machine's cover.
7. Reattach all peripherals to your computer, and start the system.

Installing in Windows® 2000 and Windows® XP

1. When Windows starts, it will detect the new USB 2.0 PCI Host Adapter in your system and display the first screen of the "Add New Hardware Wizard" (screen examples are shown below; your screens may differ depending on hardware and Windows® version). Click on "Next".



2. In the next screen of the "Add New Hardware Wizard", select "Display a list of all the drivers...." then click "Next".

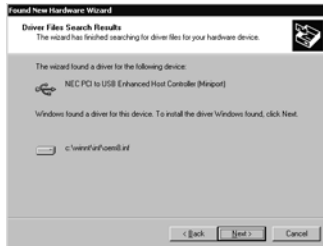


3. The next screen (shown below) asks you to select the hardware device driver you will use. Select the "NEC PCI to USB Enhanced Host Controller" and click "Next".

Note: If this driver is not displayed among the screen's choices, specify the location of the driver file. Windows will display a list of manufacturers and models, from which you can select the "NEC PCI to USB Enhanced Host Controller" device driver. After selecting this driver, click "Yes" on the update warning prompt that appears.



4. Windows will now either confirm that it has found the driver file you specified, or prompt you to insert your Windows installation CD. Click "Next" to continue once the driver file is available to Windows.



5. When Windows has finished copying and installing the device drivers, it will display the following dialog box. Click "Finish" to complete installing the USB 2.0 Host Adapter.



6. [Windows XP only]. Obtain USB 2.0 updates for the Windows XP driver set from Microsoft's "Windows Update" web site (<http://www.windowsupdate.com>). Windows Update will search your system and select the correct downloads for your configuration. The current driver update is version number 5.1.2600.0. For detailed instructions on Windows XP driver updating, see the Frequently Asked Questions page for the USB 2.0 Host Adapter at <http://www.lavalink.com>.

Checking the Installation

To confirm that the USB 2.0 Host Adapter was correctly installed, go to My Computer | Control Panel | System | Device Manager, and click on the plus sign in front of the "Universal Serial Bus controllers" heading. You should see an entry for the NEC PCI to USB Enhanced Host Controller.



Release Notes:

- A. Window 98SE and Windows Me users can use the USB 2.0 Host Adapter in their systems, but as these versions of Windows do not have USB 2.0 support, the USB 2.0 Host Adapter will operate at USB 1.1 speeds.



Lava Technical Support

9:00 am to 5:30 pm Monday to Friday (Eastern Time)

Tel: +416 674-5942

Fax: + 416 674-8262

E-mail: tech@lavalink.com

Internet: www.lavalink.com



Lava Computer MFG Inc.



This device complies with part 15 of the FCC Rules. Operation is subject to the following conditions: (1) This device may not cause harmful interference, and (2) this device must accept any interference received, including interference that may cause undesired operation.

Lava Computer MFG Inc. 908 Niagara Falls Blvd. #629. North Tonawanda NY 14120-2060

