



IEEE 1394 PC-Card Interface Adapter



1 3 9 4

™

Rev. A02

Congratulations on your purchase of the Lava IEEE 1394 Interface Adapter. The Lava IEEE 1394 Interface Adapter is a PC bus card for connecting high-performance serial bus IEEE 1394. It is compatible with IEEE 1394-1995, P1394a, and OHCI 1.0 standards, supported in Windows® 98 SE/ME/2000.

By simply plugging in the Lava IEEE 1394 Interface Adapter, you will:

- Instantly add a 1394 serial bus to any 1394-capable computer.
- Ensure transfer rates of up to 400 Mbps.
- Be able to plug in or unplug 1394 devices without having to reboot the computer.
- Be able to connect up to 62 1394-compliant external devices.

Included with your package, you should have the following:

- Lava IEEE 1394 Interface Adapter.
- One 6-pin IEEE 1394 connector.
- One 4-pin IEEE 1394 connector.
- User's manual

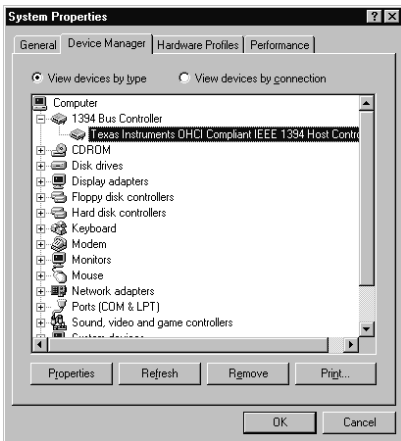
Installation and Removal

Insert the Lava IEEE 1394 Interface Adapter into the PC Cardbus slot of a computer. Note: Lava recommends turning off the computer when inserting or removing the card. Not doing so may hang the computer with some operating systems and some slots.

Note: In some cases, some versions of Windows® may require the Windows Installation CD to supply drivers for the card.

To make sure you have installed successfully, check the 'System Properties' dialog box:

To check 'System Properties' go to 'My Computer,' 'Control Panel,' 'System Properties,' 'Device Manager,' '1394 Bus Controller.' It should show: 'Texas Instruments OHCI Compliant IEEE 1394 Host Controller.'



Driver Installation



1. When Windows® detects your PC-Card, it will initiate the Add New Hardware Wizard. Click 'Next' to continue. The text of your screens may differ slightly from those shown.



2. Click 'Next' to initiate a search for the best driver for your device.



3. If necessary, insert the Windows® CD-ROM, and click 'Have Disk...'



4. A download dialog box will appear briefly, indicating the progress of the driver installation. When installation is complete, click "Finish."

This page intentionally
left blank.



For Europe

This device is in conformity with the EMC directive.



Tested to comply with FCC standards. FOR HOME OR OFFICE USE.

This device complies with Part 15 of the FCC rules. Operation is subject to the following two conditions: 1) This device may not cause harmful interference, and 2) This device must accept any interference received, including interference that may cause undesired operation.

Federal Communications Commission (FCC) Statement

This equipment has been tested and found to comply with the limits for a Class B digital device, pursuant to Part 15 of the FCC Rules. Those limits are designed to provide reasonable protection against harmful interference in a residential installation. This equipment generates, uses, and can radiate radio frequency energy and, if not installed and used in accordance with the instructions, may cause harmful interference to radio communications. However, there is no guarantee that interference will not occur in a particular installation. If this equipment does cause harmful interference to radio or television reception, which can be determined by turning the equipment off and on, the user is encouraged to try to correct the interference by one or more of the following measures:

- Reorient or relocate the receiving antennas.
- Increase the separation between the equipment and the receiver.
- Connect the equipment into an outlet on a circuit different from that to which the receiver is connected.
- Consult the dealer or an experienced radio/TV technician for help.

The fr, fr1394, and frIDE logos and frIDE and FireDrive are trademarks or registered trademarks of fr Inc. fr Inc. is a member of the Lava group of companies. Macintosh, Mac OS, and FireWire are registered trademarks of Apple Computer, Inc. Windows, Windows NT, Windows 98, Windows ME, and Windows 2000 are either trademarks or registered trademarks of Microsoft Corporation in the United States and/or other countries.

Lava Technical Support

9:00 am to 5:30 pm Monday to Friday
(Eastern Time)

Tel: + 416-674-5942

Fax: + 416-674-8262

E-mail: tech@lavalink.com

Internet: www.lavalink.com



Lava Computer MFG Inc.
Toronto, Canada